

# CERTIFICATE OF LOCATION OF GOVERNMENT CORNER

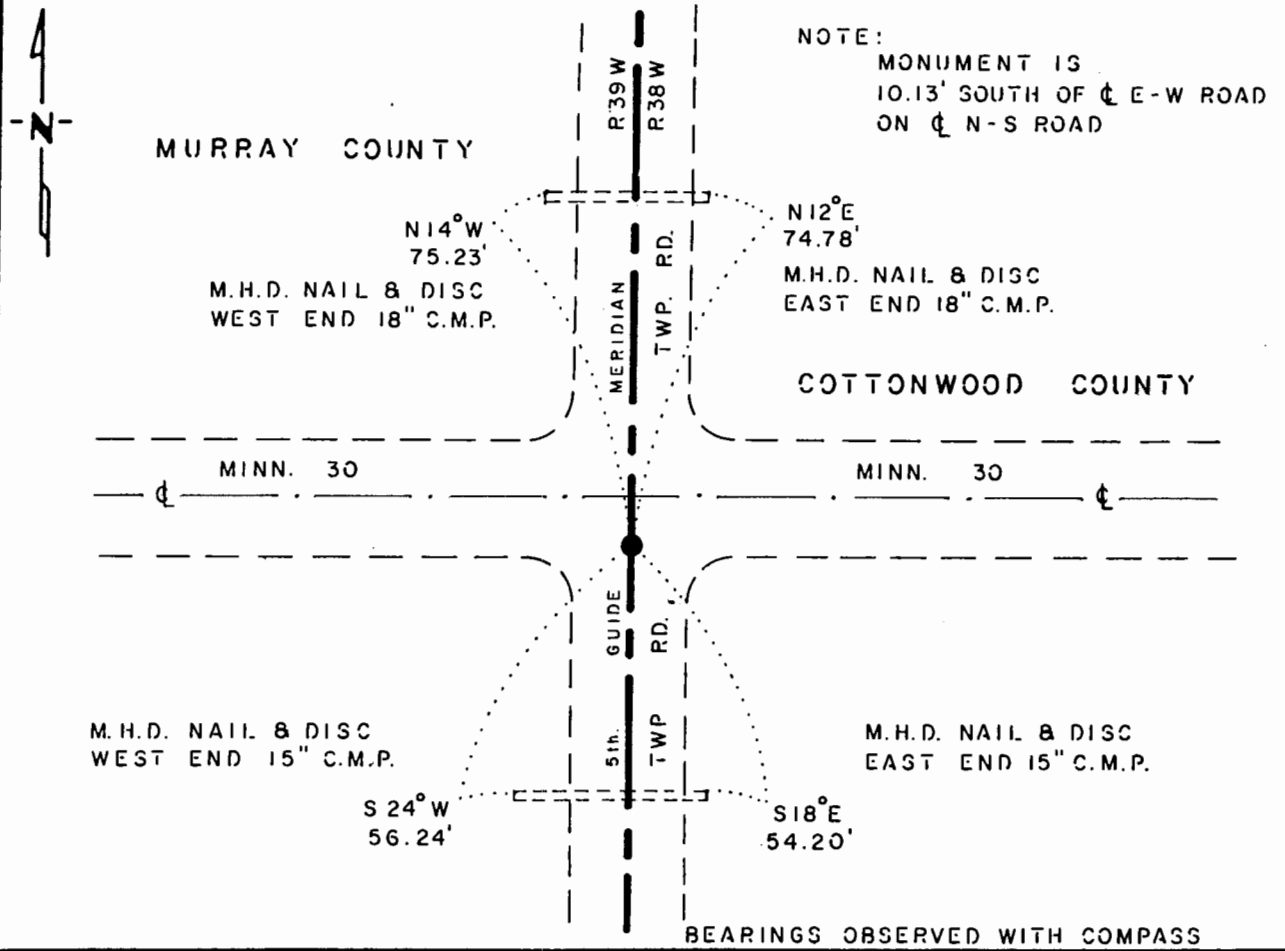
NORTHEAST Corner of Section 36, Township 107 N., Range 39 W., 5<sup>th</sup> P.M.

STATE OF MINNESOTA, County of MURRAY

At the corner location shown on the sketch:

- On 3-19-85 found a CAPPED CONCRETE MONUMENT, DOWN 24"  
DATE
- left monument as found,  lowered monument,  removed monument (explain)
- On 3-19-85 placed a 1 1/4" x 1 1/4" x 20" PERFORATED STEEL TUBE WITH  
DATE  
ALUMINUM CAP STAMPED "D.N.R. SURVEY MARKER", OVER CONC. MON. DOWN 0.1'

### SKETCH OF REFERENCE TIES



NOTE:  
 MONUMENT IS  
 10.13' SOUTH OF  $\phi$  E-W ROAD  
 ON  $\phi$  N-S ROAD

BEARINGS OBSERVED WITH COMPASS

Statement of evidence relative to this corner location is on back of page.

J. B. M. 10-25-85  
G-1181

I hereby certify that this document and the data contained herein was prepared by me or under my direct supervision.

*Louell R. Pomeroy* 11-7-85  
 SIGNATURE DATE  
 Registration No. 17005

- Land Surveyor,  Professional Engineer
- County Surveyor,  County Engineer

OFFICE OF THE COUNTY RECORDER  
County of \_\_\_\_\_

I hereby certify that this document was filed in the Co. Recorders office at \_\_\_\_\_ .M. on the \_\_\_\_\_ day of \_\_\_\_\_ A.D., 19 \_\_\_\_\_

County Recorder \_\_\_\_\_

By \_\_\_\_\_, Deputy

DOCUMENT NO. \_\_\_\_\_

Northeast Corner Section 36, Township 107 North, Range 39 West

This corner was originally established by the U. S. General Land Office survey in 1857. The government notes show corner marked with a wood post set in mound of earth with pits and trench dug around the mound. Also deposited charcoal and planted plum seeds northeast and southwest.

In March 1985, the DNR Bureau of Engineering contacted the following for corner information:

Murray County Offices of the Recorder and Highway Engineer  
Cottonwood County Offices of the Recorder and Highway Engineer  
Mn/Dot Office in St. Paul  
U.S. Dept. of the Interior, Fish and Wildlife Office in Minneapolis  
Land Surveying Firms:  
Martin Land Surveying of Worthington  
Madsen Land Surveyors of Fairmont  
Sioux Engineering of Windom

The following information was obtained from the Cottonwood County Recorders Office:

A railroad right-of-way plat, date not indicated, shows this corner 1172 feet south of railroad center line station 1807 + 23, and 2636 feet from the east quarter corner of Section 25. Plat does not show what was found or set at the corner.

The following information was obtained from Sioux Engineering:

A copy of a resurvey plat of Township 107 North, Range 38 West, obtained from Howard Boeck of Westbrook, and done by C. W. Gove, County Surveyor, in 1898, shows this corner:

2881 ft. from the north quarter corner Section 31  
2637 ft. from the east quarter corner Section 25

Survey does not show what was found or set at the corner.

The following information was obtained from the Murray County Recorders Office:

Surveyors Record Book, on page 289 contains a survey by J. W. Woolstencraft, County Surveyor, dated April 11, 1924. Survey states corner is a stone 12" by 14" by 20", and:

fences 33 ft. west and 33 ft. south  
5283.4 ft. to the township corner south  
2635.2 ft. to the north quarter corner Section 36

Surveyors Record Book, on page 391, contains a survey by F. A. March, dated 1930's. Survey states corner is a concrete stone with ties:

reference point - tack in light pole, southeast 47.5 ft.  
reference point - tack in corner fence post, southwest 46.4 ft.  
reference point - tack in telephone pole, northeast, 50.5 ft.

The following information was obtained from the Mn/Dot Office in St. Paul:

The right-of-way map of Minnesota Trunk Highway 30, date not indicated shows the corner as a stone monument in place at intersections of roads north-south and east-west. Also a note about a replacement certificate dated 1953 shows that a 30" concrete monument is in place with ties:

reference disc in culvert, 54.25 ft. southeast  
reference disc in culvert, 56.4 ft. southwest  
reference disc in culvert, 75.3 ft. northwest  
reference disc in culvert, 74.85 ft. northeast

The following information was obtained from the Murray County Recorders Office:

A certificate of replacing section corner, dated January 30, 1953, by Ralph J. Flemming, highway engineer, shows that a concrete monument with an "x" on top was found 1.85 ft. below road surface. Monument was replaced with a 30" precast concrete monument with aluminum cap set down 1.3 ft. below grade. Corner is 10.2 ft. right of highway station 914 + 28.0. Ties shown are the same that appear on Trunk Highway 30 right-of-way map.

In March 1985, the DNR Bureau of Engineering traversed to the area of the corner and found a concrete monument with cap down 24". Monument is 10.13 ft. south of the center line Highway 30, and on the center line of township road north-south. Searched for and found record ties as shown.

Accept the concrete monument as the location of the corner.

Traverse information is available from the DNR Bureau of Engineering.